

# CVSAe



## CONTINUOUSLY VARIABLE ELECTRONIC SUSPENSION WITH EXTERNAL VALVE

### DRIVING AGILITY

- Body control
- Steering response

### SECURE FEELING

- Easier control during avoidance maneuvers
- Reduced braking distance

### IMPROVED COMFORT AND NVH

- Road isolation
- End-stop control
- Wheel-hop control



SUITABLE FOR SPORTS CARS, SUV, BEV AND LUXURY SEDANS

**OVER 16**

Million units sold

**75**

Different models in  
the global market

**12 OE BRANDS**

BECAUSE IN A CONSTANTLY CHANGING  
WORLD, BEING READY FOR THE ROAD  
AHEAD IS SMART, BUT ANTICIPATING THE  
ROAD AHEAD? THAT'S INTELLIGENT.

MONROE® INTELLIGENT SUSPENSION



## CVSAe KEY FEATURES

### CONTINUOUS CONTROL OF COMFORT AND SUPERB HANDLING

Road and driver inputs are continuously monitored and translated into a current demand to the electrohydraulic valve delivering optimum damping at all times.

Experience a higher ride comfort and more dynamic vehicle handling compared to conventional suspension thanks to the extra dimension added by the continuously controlled electrohydraulic valve.

Select a drive mode for a smoother ride or a more sporty experience, changing the vehicle's ride&handling characteristics.

- Very low system power consumption, beneficial for BEV's.
- The fast damper response benefits the vehicle dynamics performance of heavier battery electric vehicles.
- CVSAe is compatible with both coil and air springs.
- Large damper stroke available to allow sufficient wheel travel for SUV's.

### CONTROL LOGIC

Continuously adapting to the road thanks to a tailored advanced digital CONTROL LOGIC.

CONTROL LOGIC are the algorithms in charge of collecting what's happening around the vehicle, gathering all the information coming from the vehicle sensors, and transforming it real-time into signals for the intelligent dampers to adapt the behavior of the car in every situation.



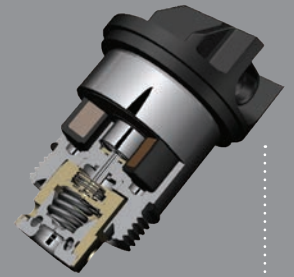
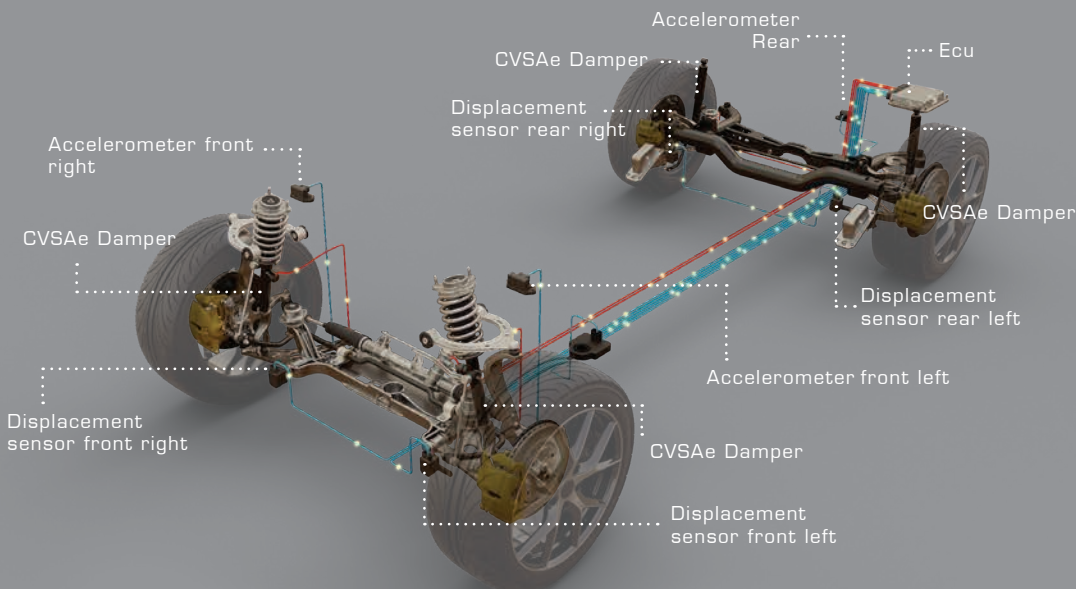
### MAXIMUM PERFORMANCE

- Combining core control with proactive functions.
- Developed and tested modular algorithm library.
- Tailored damper current control.

## CVSAe SYSTEM LAYOUT

Flexible sensor architecture:

1 IMU or 3 body accelerometers



### ELECTRONIC VALVE

The heart of the system.

High efficient active electrohydraulic valve capable of adapting the whole system in matters of milliseconds.



## MONROE INTELLIGENT SUSPENSION

Is a brand from Tenneco that is recognised as a trusted partner for innovative, sustainable and performance- driven ride solutions.

Drivers need visionaries to turn today's trends into products for tomorrow. At Monroe Intelligent Suspension, we join forces with the best and brightest in the industry, collaborating as a full-system partner on custom and performance technologies that sense and react to road inputs. Just as our suspension technologies adapt to changes, we use insights and our broad industry perspective to guide our innovation, intuitively adapting for a more sustainable future for all.





### CONTACT

[infoMIS@driv.com](mailto:infoMIS@driv.com)

### WEBSITE

[www.monroeintelligentsuspension.com](http://www.monroeintelligentsuspension.com)

### SOCIAL

-  [linkedin.com/showcase/monroeintelligentsuspension](https://www.linkedin.com/showcase/monroeintelligentsuspension)
-  [instagram.com/monroe.intelligent.suspension](https://www.instagram.com/monroe.intelligent.suspension)
-  [facebook.com/MonroeIntelligentSuspension.Official](https://www.facebook.com/MonroeIntelligentSuspension.Official)
-  [youtube.com/c/MonroeIntelligentSuspension](https://www.youtube.com/c/MonroeIntelligentSuspension)

[#DrivingWhatsNEXT](https://twitter.com/DrivingWhatsNEXT)



**MONROE**  
INTELLIGENT SUSPENSION